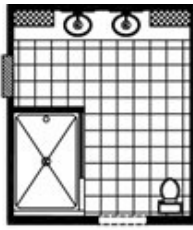




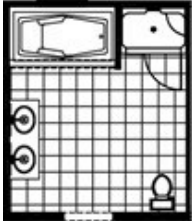
REVOLUTION 68



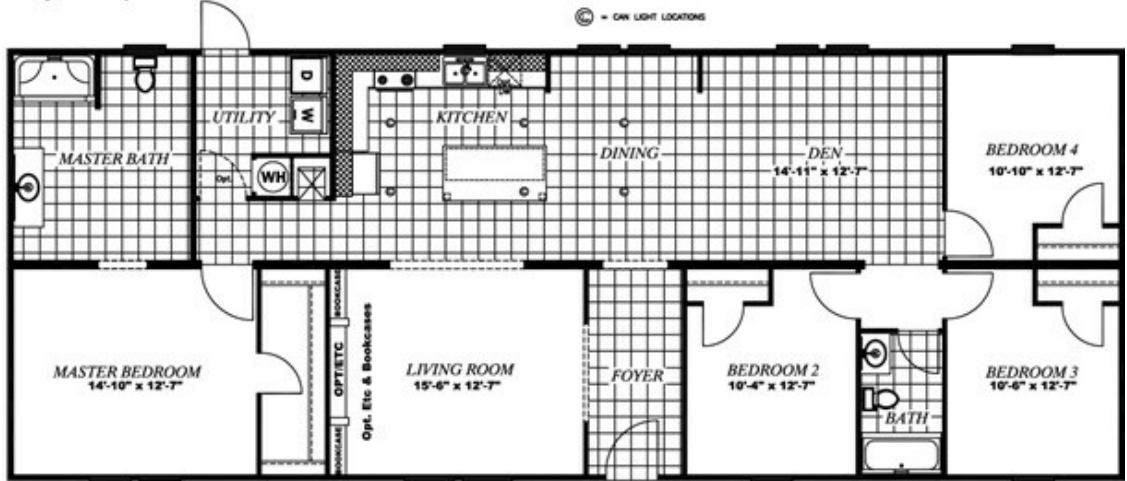
REVOLUTION 68 Floor plan number: SGI016112TNAB
4 beds • 2 baths • 1904 sq.ft. • 28' width • 68' depth



Opt. Fantasy Bath



Opt. Glamour Bath



Our home building facilities invest in continuous product and process improvements. Plans, dimensions, features, materials, specifications and availability are subject to change without notice or obligation. Renderings and floor plans are representative likenesses of our homes and may differ from the actual homes. We invite you to tour a Home Center near you and inspect the highest value in quality housing available or call (601) 932-5017 to speak with a Home Consultant. Copyright 2017, CMH. All rights reserved.

FREEDOM HOMES-PEARL

2250 HWY 80 EAST
PEARL, MS 39208

Monday - Thursday: 9am - 6pm
Friday: 9am - 5pm
Saturday: 9am - 5pm
Sunday: Closed

(601) 932-5017